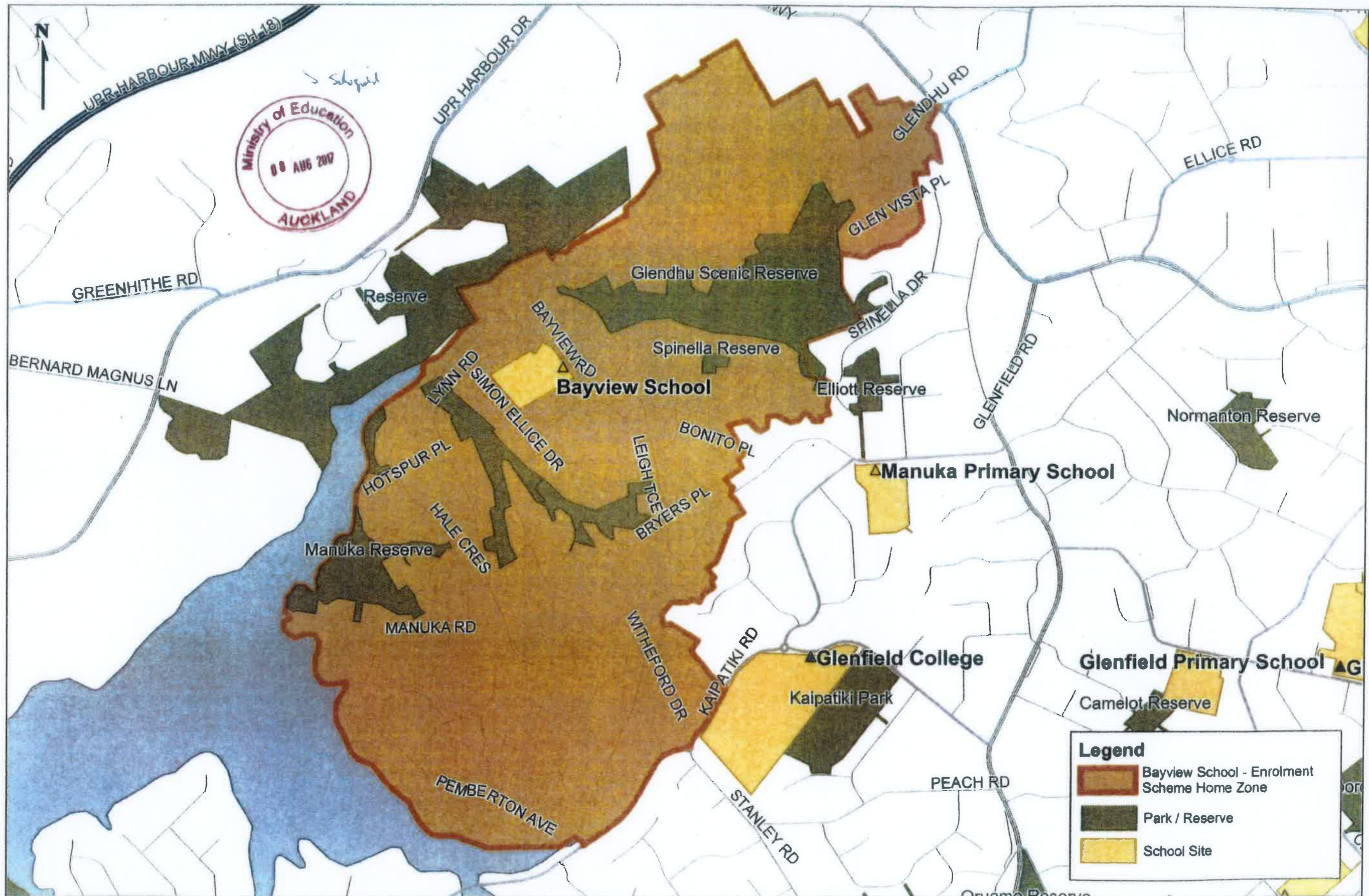


Bayview School - Enrolment Scheme Home Zone



Legend

- Bayview School - Enrolment Scheme Home Zone
- Park / Reserve
- School Site

Bayview School (1222)
Enrolment Scheme
Effective from 1 January 2018

The guidelines for development and operation of enrolment schemes are issued under section 11G (3) of the Education Act 1989 for the purpose of describing the basis on which the Secretary's powers in relation to enrolment schemes will be exercised.

Home Zone

All students who live within the home zone described below shall be entitled to enrol at the school.

Starting at the intersection of Glendhu Road (included) and Albany Highway (excluded), travel south west along Glendhu Road and south along Glen Vista Place (included). From the end of Glen Vista place, travel south west across country through Glendhu Scenic Reserve to the intersection of Malibu Place (excluded) and Spinella Drive. Travel west along Spinella Drive (89, 96 and below included), south along Catina Avenue, and continue south then east along Bayview Road to the intersection with Manuka Road. Travel south west along Manuka Road (68, 99 and above included), south along Withford Drive and south west across country to the coastline. Follow the coastline north and continue north east, along Hellyers Creek and across country to Glendhu Road. Travel east along Glendhu Road, back to the starting point.

All residential addresses on included sides of boundary roads and all no exit roads off included sides of boundary roads are included in the zone unless otherwise stated.

Proof of residence within the home zone will be required.

Each year, applications for enrolment in the following year from in-zone students will be sought by a date which will be published in a daily or community newspaper circulating in the area served by the school. This will enable the board to assess the number of places which can be made available to students who live outside the home zone.

Special Programmes

This priority category is not applicable at this school because the school does not run a Special Programme approved by the Secretary.

Out of Zone Enrolments

Each year the board will determine the number of places which are likely to be available in the following year for the enrolment of students who live outside the home zone. The board will publish this information by notice in a daily or community newspaper circulating in the area served by the school. The notice will indicate how applications are to be made and will specify a date by which all applications must be received.

Applications for enrolment will be processed in the following order of priority:

- First Priority** This priority category is not applicable at this school because the school does not run a Special Programme approved by the Secretary.
- Second Priority** will be given to applicants who are siblings of current students.
- Third Priority** will be given to applicants who are siblings of former students.
- Fourth Priority** will be given to any applicant who is a child of a former student of the school.
- Fifth Priority** will be given to any applicant who is either a child of an employee of the board of the school or a child of a member of the board of the school.
- Sixth Priority** will be given to all other applicants.

If there are more applicants in the second, third, fourth, fifth or sixth priority groups than there are places available, selection within the priority group will be by a ballot conducted in accordance with instructions issued by the Secretary under Section 11G(1) of the Education Act 1989. Parents will be informed of the date of any ballot by notice in a daily or community newspaper circulating in the area served by the school.

Applicants seeking second or third priority status may be required to give proof of a sibling relationship.

